



Transportation Pooled Fund-5(522), PG3

Joel Uling, Pavement Preservation Engineer
Office of Materials and Road Research

Minnesota PG3 Pavement Preservation Treatment
March 20, 2025



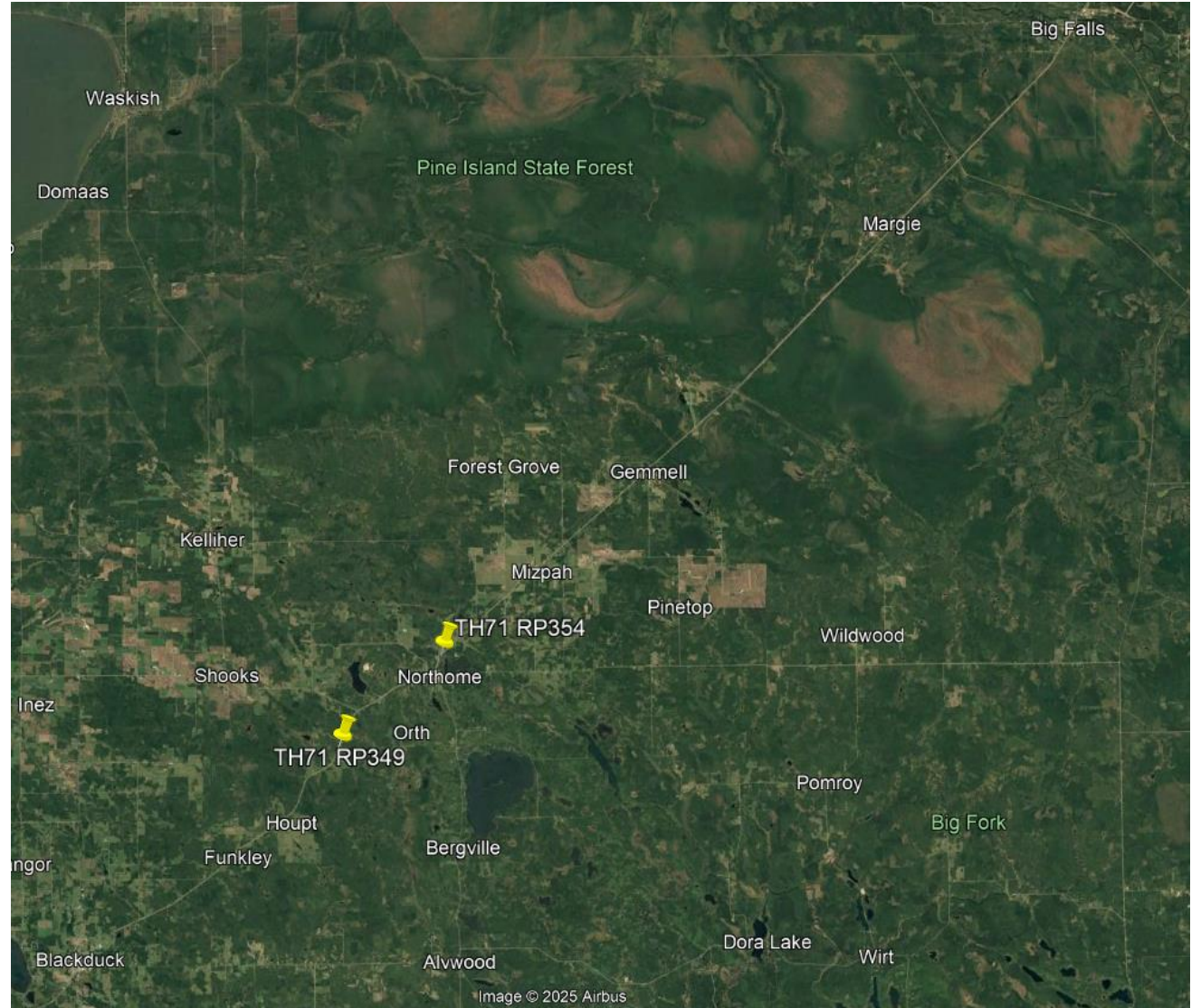
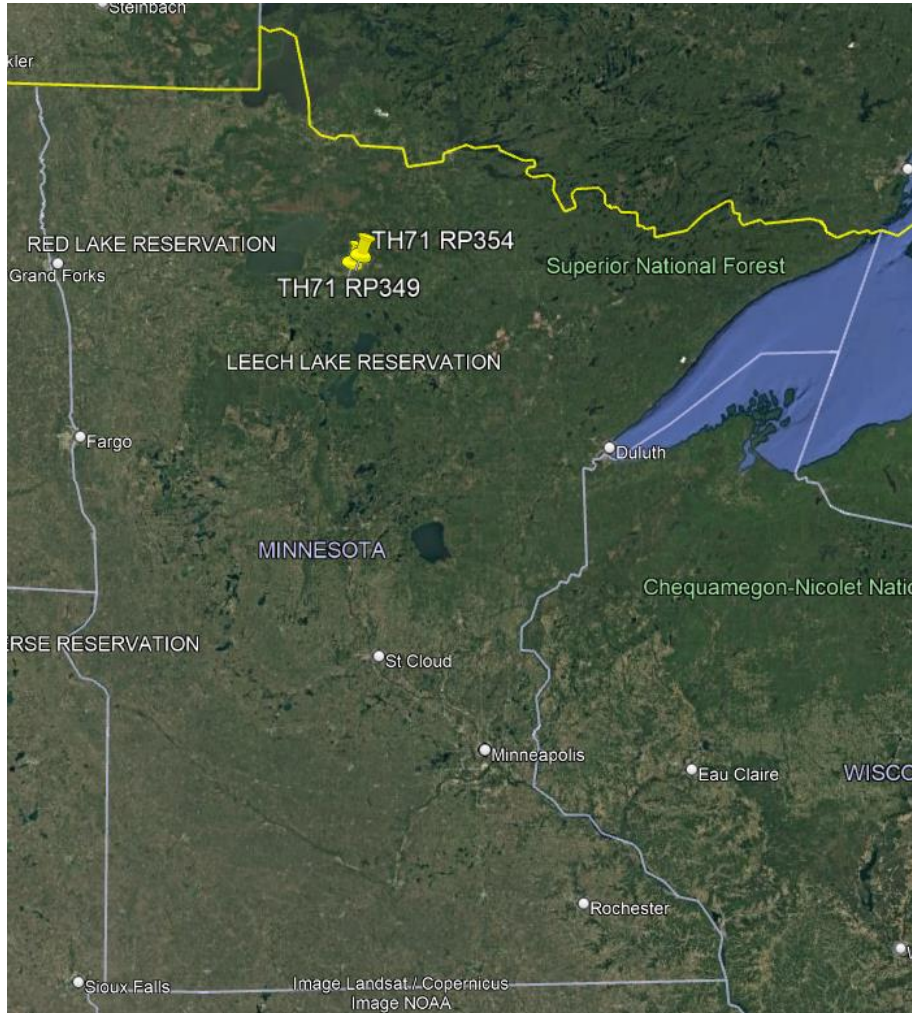
Minnesota PG3 Pavement Preservation Treatment

Scrub Cape Seal



Minnesota PG3 Pavement Preservation Treatment

Project Location



Minnesota PG3 Pavement Preservation Treatment

Scrub Cape Seal



Minnesota PG3 Pavement Preservation Treatment

Scrub Cape Seal



Minnesota PG3 Pavement Preservation Treatment

Scrub Cape Seal – Primary Treatment is “Cell B”

PG3 Test Sections:

Primary Treatment
Other Treatments

Cell B - Cape Seal, Micro-Surfacing (1 lift) over Scrub Seal

Cell A - Scrub Seal Only

Cell C - Cape Seal, Micro Surfacing (2 lift) over Scrub Seal

Cell D - Micro Surfacing only (2 lift)

Cell E - Micro Surfacing over traditional crack fill

Cell F - Control

Cell A
600'

Cell B
600'

Cell C
600'

Cell D
600'

Cell E
600'

Cell F
600'

Scrub Seal Only

**Cape Seal, Micro Surfacing
(1 Lift) over Scrub Seal**

Cape Seal, Micro Surfacing
(Two Lift) over Scrub Seal

Micro Surfacing
(Two Lift) Only

Micro Surfacing
(Two Lift)
over Traditional Crack Fill

Control

3,600'

(50' transition at beginning and end of each test cell)

Minnesota PG3 Pavement Preservation Treatment

Scrub Cape Seal

IRI Data



Average IRI

- Severe: Greater than 220
- Moderate: Between 110 and 220
- Good: Less than 110

Minnesota PG3 Pavement Preservation Treatment

Scrub Cape Seal

Rutting Data



Average Rutting

- Severe: Greater than 0.5"
- Moderate: Between 0.25" and 0.5"
- Good: Less than 0.25"

Minnesota PG3 Pavement Preservation Treatment

Scrub Cape Seal



THANK YOU!

Joel Ulring

joel.ulring@state.mn.us

(651)366-5432

MINNESOTA

